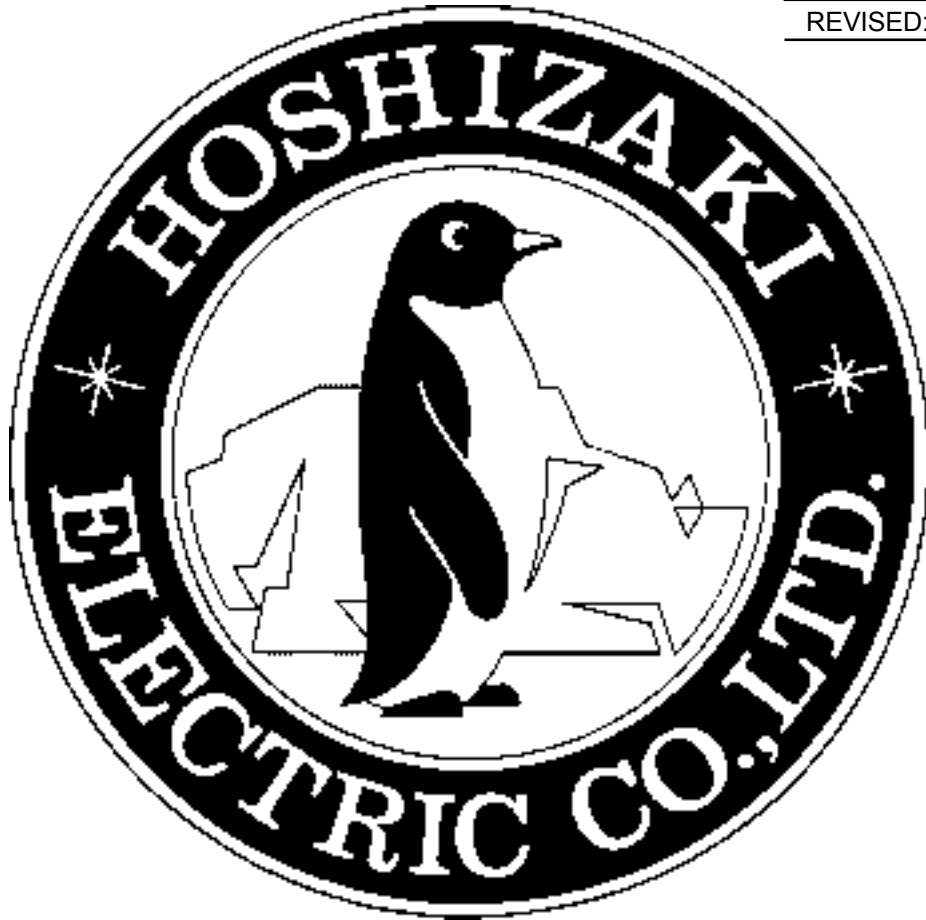

NO. 24ME-1895

ISSUED: FEB. 06, 1997

REVISED: T 05.GJ 201F



**HOSHIZAKI
SHUTTLE ICE DISPENSER**

MODEL DSM-12CE

**PARTS LIST
(HE)**

**G-1 APR. 1997
H-0 DEC. 1997
H-3 SEP. 1998
V-1 APR. 2010
V-2 DEC. 2010**

AUXILIARY CODE

U - 1

The auxiliary code is the first two characters in the serial number. The first character indicates the production year. Years progress or regress in alphabetical order. The series of letters and skipped letters depend on UL listing, production, and model. See the auxiliary code(s) and corresponding year(s) on the front cover.

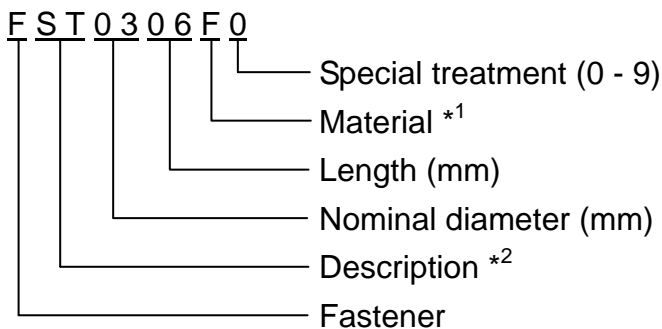
The second character indicates significant part changes within the same year. Base is "1" and this number advances for each change. If there is no significant part change at the turn of the year, this number starts from "0."

MAR S LOCATED UNDER THE AUXILIARY CODE

- = Part deleted.
- x = Part deleted and replaced by "o" part.
- o = New part in place of "x" part.

FASTENER PART NUMBER

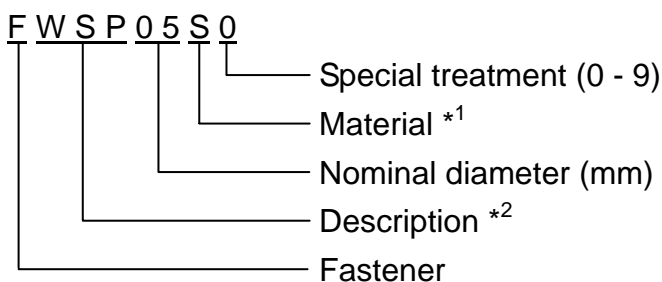
SCREWS



*1 Material

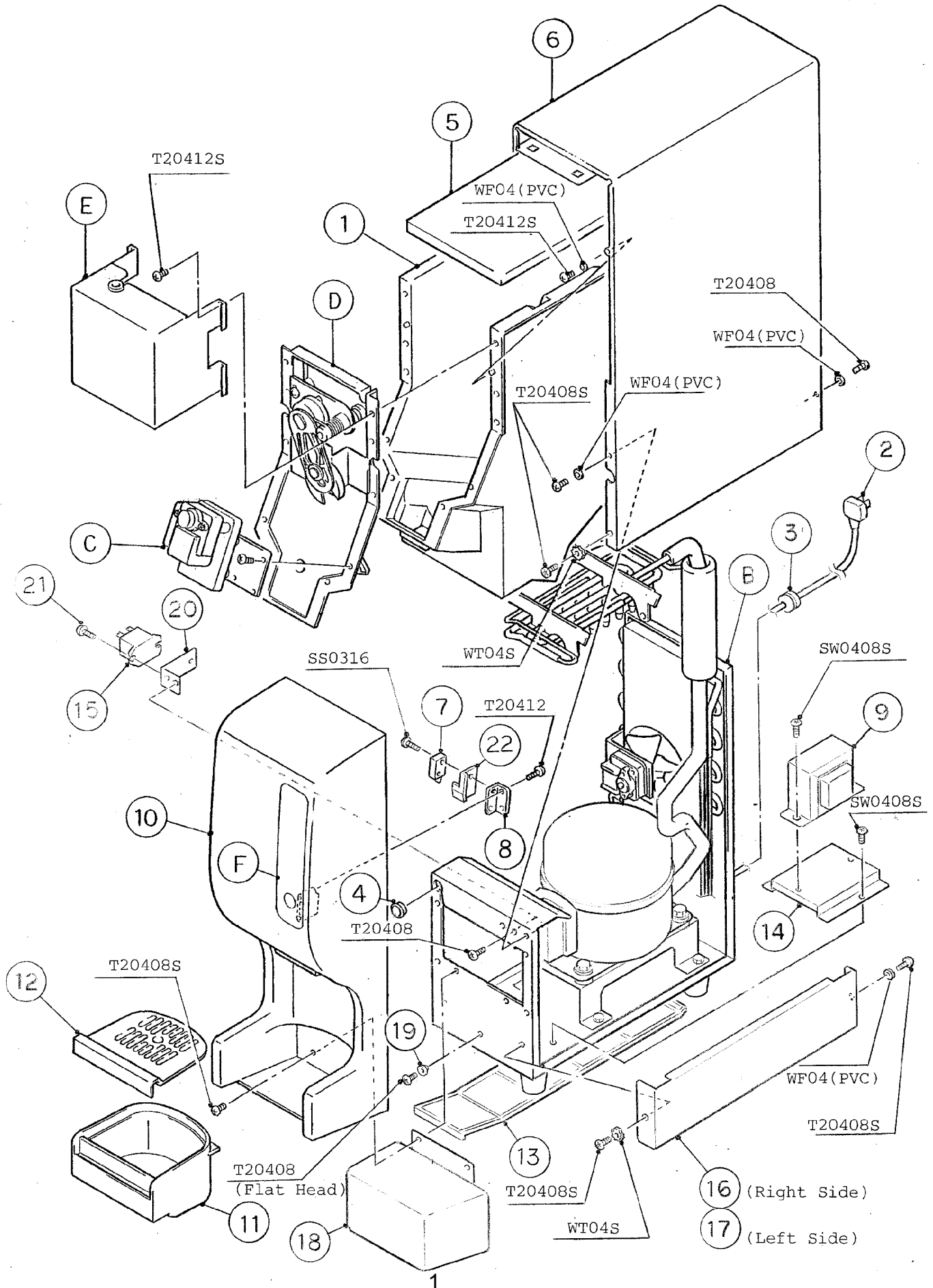
- F: Steel
- S: Austenitic stainless steel
- M: Martensitic stainless steel
- B: Copper alloy
- P: Polycarbonate
- N: Polyamide
- V: PVC
- A: ABS
- X: Polyacetal
- L: Aluminum

NUTS WASHERS



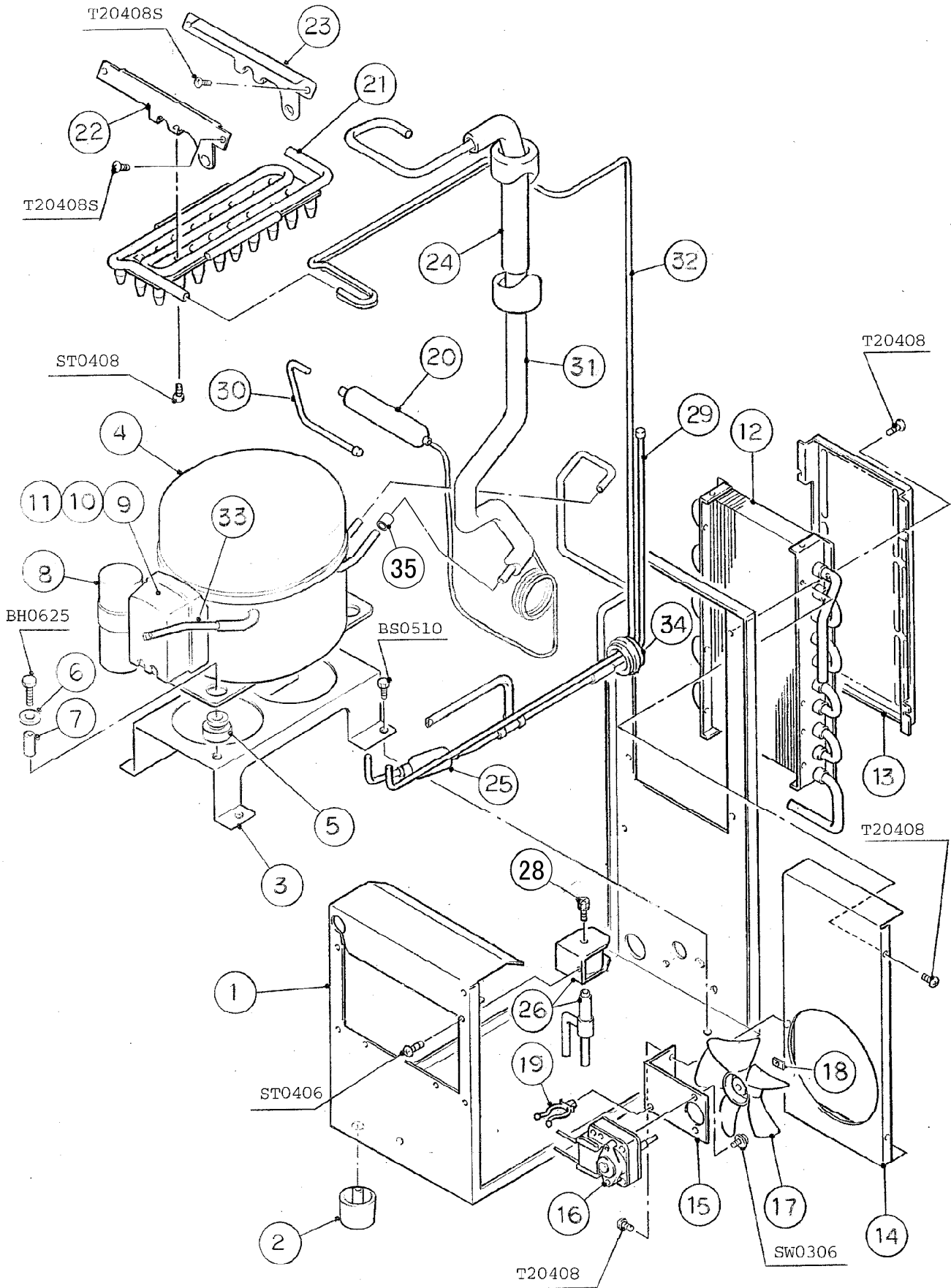
*2 Description

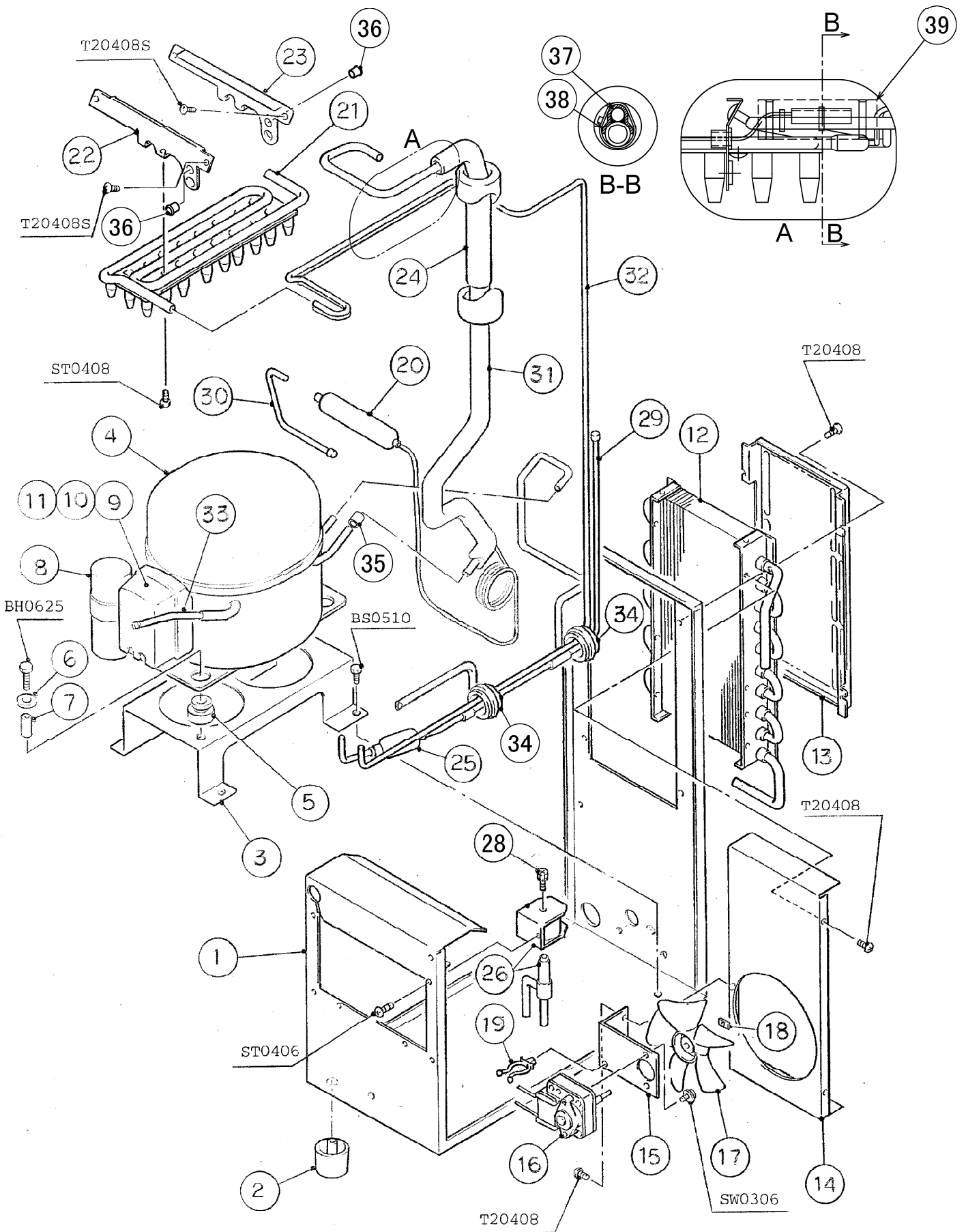
- First letter
- S: Machine screw
- T: Tapping screw
- M: Wood screw
- B: Bolt
- W: Washer
- N: Nut



HE

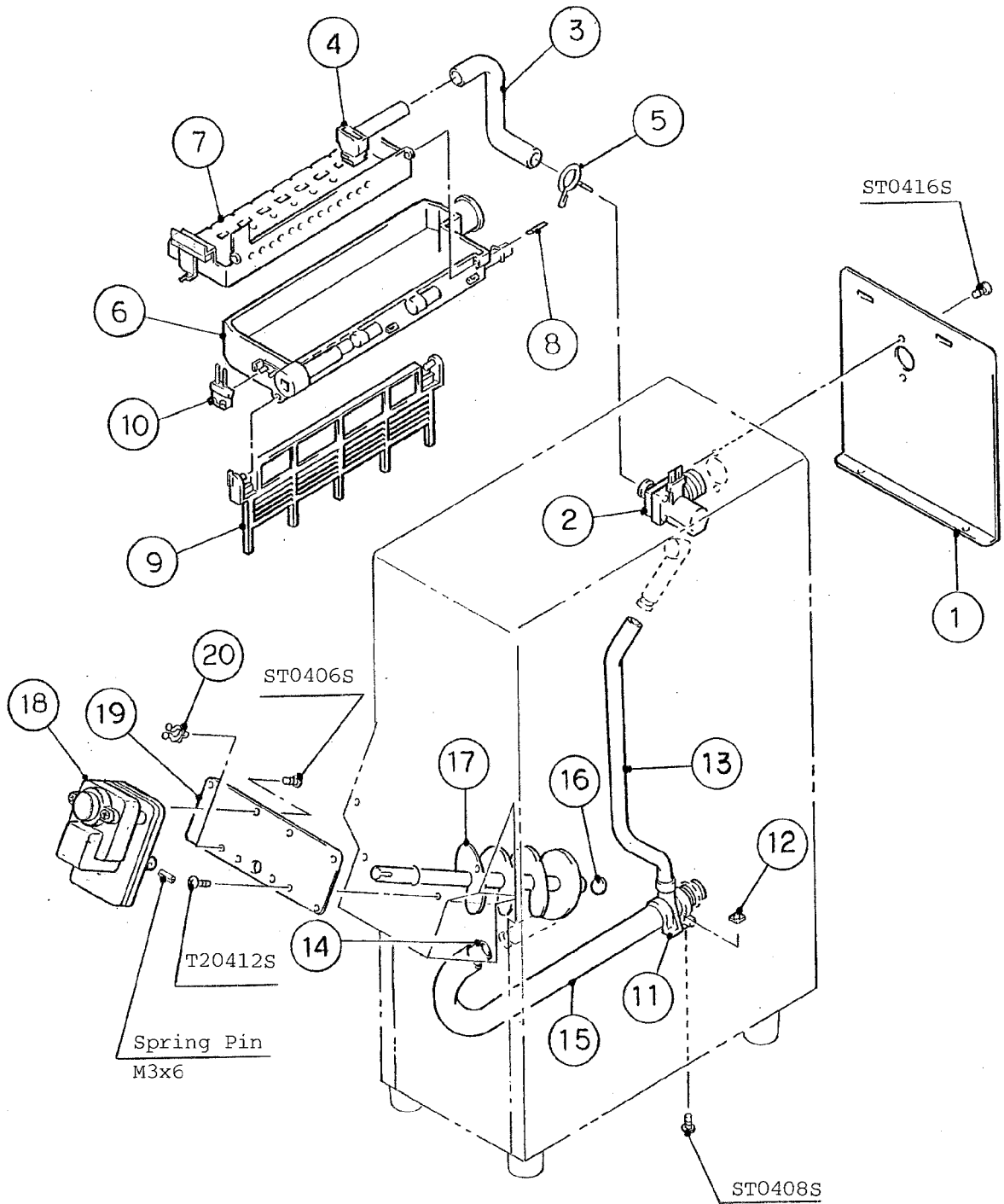
MODEL: DSM-12CE		TITLE: A. ICE DISPENSER ASSY					
INDEX NO.	DESCRIPTION	MATERIAL OR MODEL NUMBER	PART NUMBER	REQ'D NUMBER			
				G-1 H-0	H-3 V-0	V-1	V-2
B	REFRIGERATION CIRCUIT		108482A01	1	1	1	-
			121116A01				1
C	WATER CIRCUIT - DISPENSER		106114A03	1	1	1	1
D	MECHANISM ASSY		106115A02	1	1	1	-
			121004A01				1
E	CONTROL BOX ASSY		226451A01	1	-		
			229610A01		1	-	
			229610A02			1	-
H	CONTROL BOX ASSY		374506A01				1
F	LABEL LOCATION		339018A01	1	1	1	-
			374744A01				1
1	INSULATION CASE		108484G01	1	1	1	1
2	POWER SUPPLY CORD (CONTINENTAL)	(C101)	450412-01	1	1	1	1
	POWER SUPPLY CORD (UK)	(C102)	452359-01	1	1	1	1
3	BUSHING	CEE-SR6P10	448949-01	1	1	1	1
4	BUSHING	OCB-750	428394-01	1	1	1	1
5	INSULATION (E)	PE FOAM	443945-01	1	1	1	1
6	CABINET	G.S	226407G03	1	1	1	1
7	MICROSWITCH	AM50630C38	443991-01	1	1	1	1
8	BRACKET - MICROSWITCH	G.S	453113-01	1	1	1	1
9	TRANSFORMER	PK12-20149	P00108-01	1	1	1	1
10	FRONT PANEL	ABS	106117-01	1	1	1	1
11	DRAIN CASSETTE	ABS	329801-01	1	1	1	1
12	GRILLE	ABS	226523-01	1	1	1	1
13	AIR FILTER	-	329824G01	1	1	1	1
14	BRACKET - TRANSFORMER	G.S	452794-01	1	1	1	1
15	RELAY	G4B-112TI	431957-01	1	1	1	-
16	SIDE PANEL (R)	G.S	339015-01	1	1	1	1
17	SIDE PANEL (L)	G.S	339016-01	1	1	1	1
18	UNDER COVER	-	452795G01	1	1	1	1
19	TAPER COLLAR	S.S	4H0171-01	1	1	1	1
20	BRACKET - RELAY	G.S	453034-01	1	1	1	-
21	TAPPING SCREW	3x8	431415-01	2	2	2	-
22	SPACER	ABS	453047-01	1	1	1	1





HE

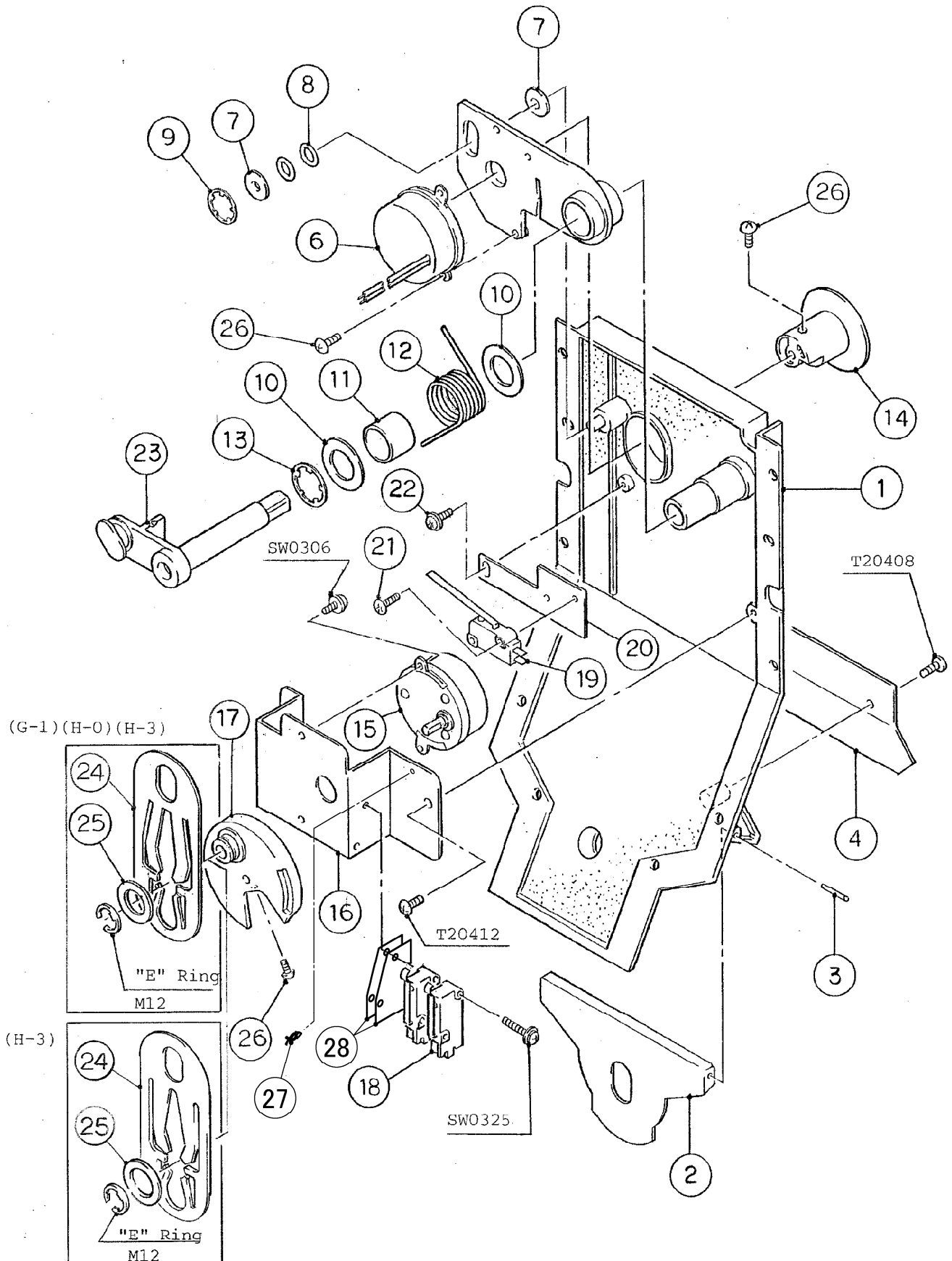
MODEL: DSM-12CE		TITLE: B. REFRIGERATION CIRCUIT					
INDEX NO.	DESCRIPTION	MATERIAL OR MODEL NUMBER	PART NUMBER	REQ'D NUMBER			
				G-1 H-0	H-3 V-0	V-1	V-2
1	BASE	G.S	226447G01	1	1	1	-
		G.S	226447G02				1
2	PLASTIC FOOT	PP	427904-01	4	4	4	4
3	BASE - COMPRESSOR	G.S	339010-01	1	1	1	1
4	COMPRESSOR	TL4F	452763-01	1	1	1	1
5	GROMMET		450897-01	4	4	4	4
6	WASHER CUSHION		450894-01	2	2	2	2
7	BUSH CUSHION		450895-01	2	2	2	2
8	START CAPACITOR	117U5014	452765-01	1	1	1	1
9	STARTER	117U6009	452764-01	1	1	1	1
10	CORD RELIEF	103N1006	450899-01	1	1	1	1
11	COVER	103N2010	450896-01	1	1	1	1
12	CONDENSER		106119-02	1	1	1	1
13	GUARD	G.S	331011-01	1	1	1	1
14	SHROUD	G.S	218468-01	1	1	1	1
15	BRACKET - FAN MOTOR	S.S	329803-01	1	1	1	1
16	FAN MOTOR	F1649R	449943-01	1	1	1	1
17	FAN	106 DIA	449942-01	1	1	1	1
18	NUT	3 DIA, S.S	449942F01	1	1	1	1
19	CLAMP	NO. 4253	427902-05	1	1	1	1
20	DRIER	DY-10QHD-2	445655-02	1	1	1	1
21	EVAPORATOR	-	108084G02	1	1	1	-
			121005G01				1
22	BRACKET - EVAPORATOR	S.S	329804-01	1	1	1	-
		S.S	374513M01				1
23	BRACKET (A) - EVAPORATOR	S.S	339081-01	1	1	1	-
		S.S	374514M01				1
24	ACCUMULATOR		414587-01	1	1	1	1
25	STRAINER		430365-01	1	1	1	1
26	HOT GAS VALVE	AMS-24B10HD-1	418866-02	1	1	1	1
28	SCREW	M4x6	443986F01	1	1	1	1
29	COPPER TUBE (A) - HIGH SIDE	COPPER	226448G01	1	1	1	1
30	COPPER TUBE (B) - HIGH SIDE	COPPER	452792-01	1	1	1	1
31	HEAT EXCHANGER	COPPER	226449G01	1	1	1	1
32	COPPER TUBE - HOT GAS	COPPER	226450G01	1	1	1	1
33	COPPER TUBE - CHARGE	COPPER	452357-02	1	1	1	1
34	INSULATION TUBE	L=25	7762-2030	1	1	1	-
		L=50	7762-0717				2
35	NEOBELT - PC		446470-01	1	1	1	1
36	BUSHING	OCB-375	428394-07				2
37	THERMISTOR	NBFC-36-H9-1	429006-01				1
38	HOLDER - THERMISTOR		429072-01				1
38	INSULATION TUBE	L=60	7762-1020				1

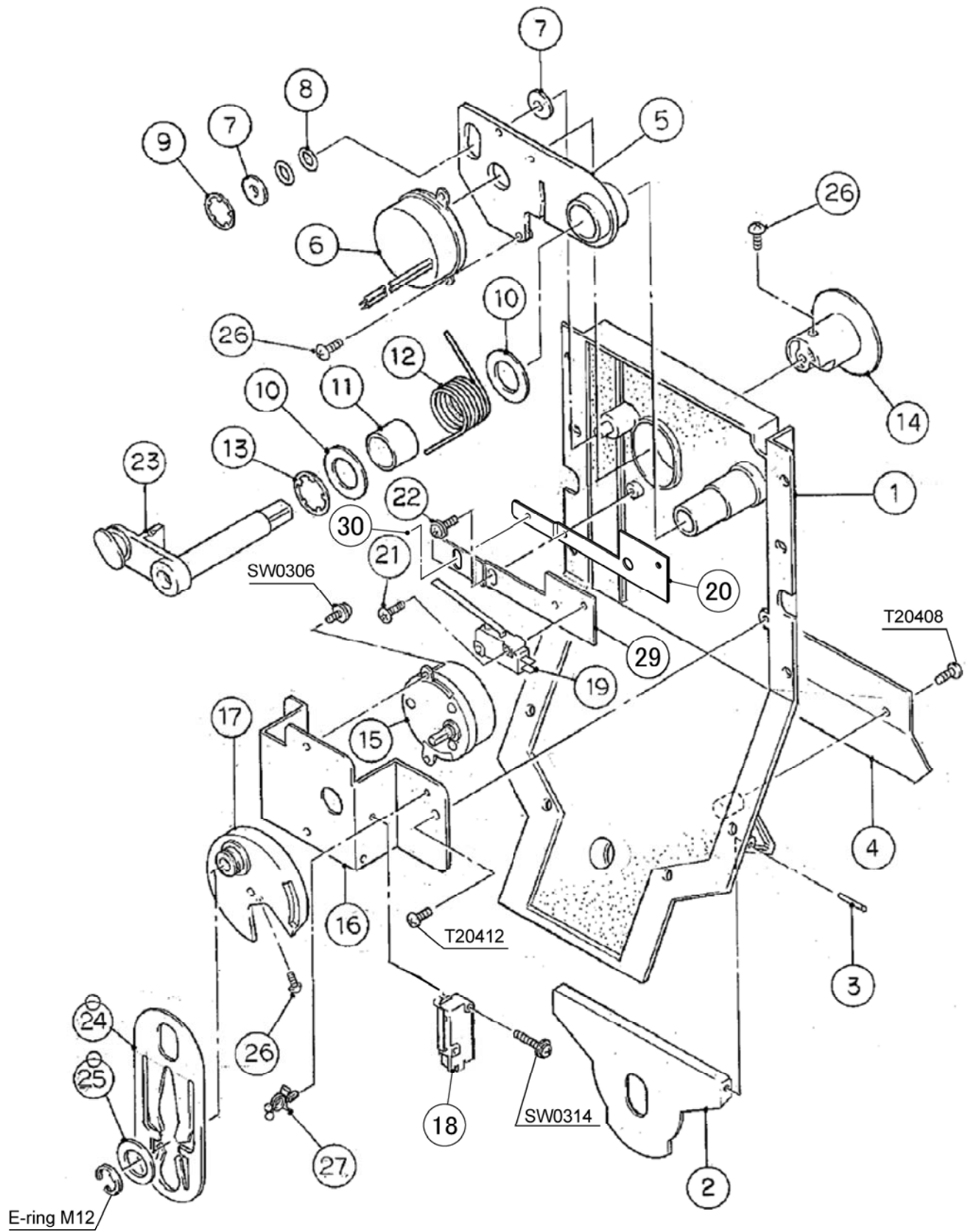


HE

MODEL: DSM-12CE	TITLE: C. WATER CIRCUIT - DISPENSER ASSY
------------------------	---

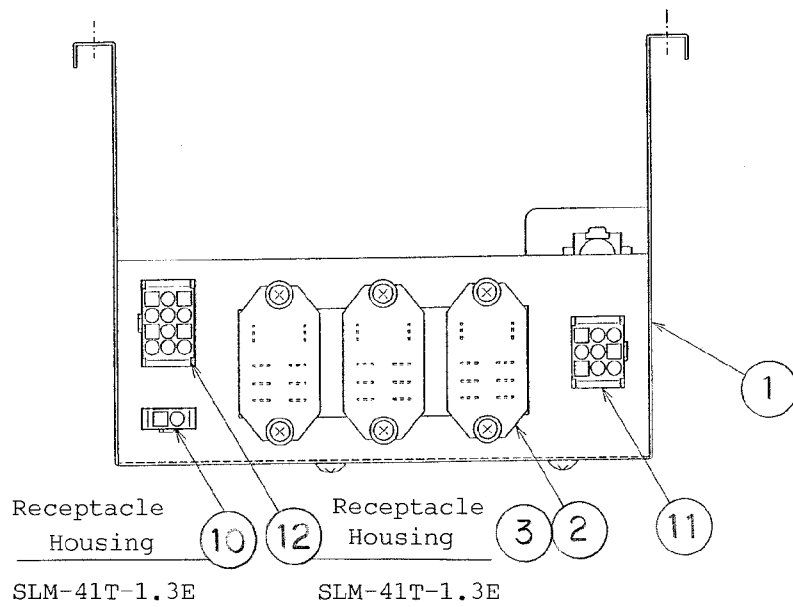
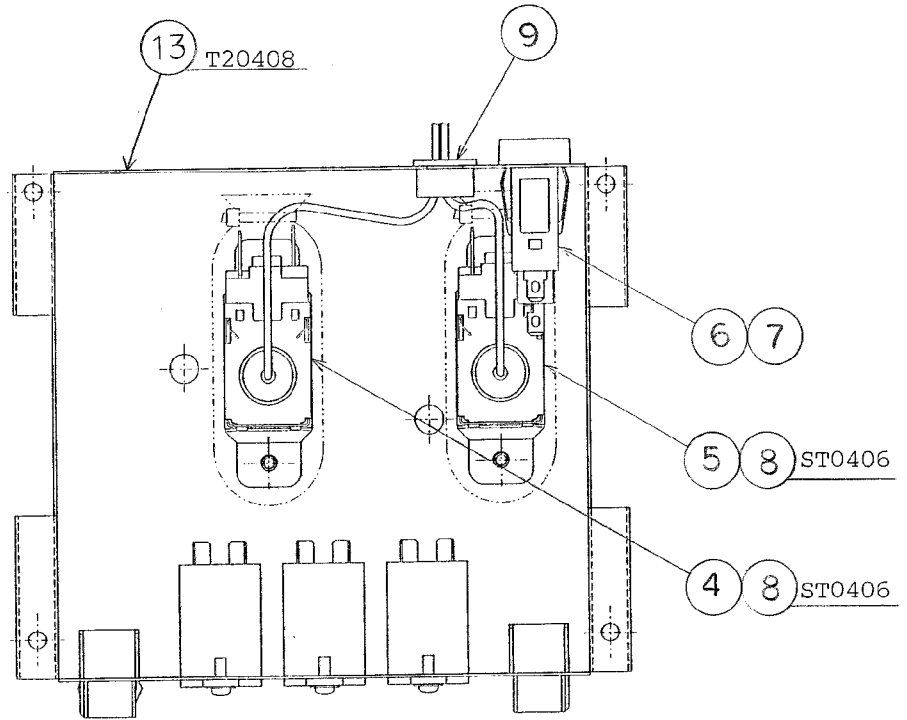
INDEX NO.	DESCRIPTION	MATERIAL OR MODEL NUMBER	PART NUMBER	REQ'D NUMBER			
				G-1 H-0	H-3 V-0	V-1	V-2
1	REAR PANEL	G.S	226454-01	1	1	1	1
2	WATER VALVE	V19	452769-01	1	1	1	1
3	WATER SUPPLY HOSE	SI. R	329808-02	1	1	1	1
4	WATER SUPPLY PIPE	PE	329809-01	1	1	1	1
5	CLAMP	16.5MM, S.S	427443-04	1	1	1	1
6	TRAY		106122-01	1	1	1	1
7	PLATE - AGITATOR	S.S	337544G01	1	1	1	1
8	PIN	S.S	414102-02	1	1	1	1
9	SENSOR - BIN	ABS	218474-01	1	1	1	1
10	MICROSWITCH	ABS1624318	443992-02	1	1	1	1
11	DRAIN PIPE	ABS	329810-01	1	1	1	1
12	NUT	M4	443997-01	2	2	2	2
13	HOSE (G)	L=450	334235-04	1	1	1	1
14	HOSE (H)	L=360	334235-05	1	1	1	1
15	INSULATION TUBE	L=360	7762-2030	1	1	1	1
16	SHEET	PTFE	443950-01	1	1	1	1
17	AUGER	S.S	329811G01	1	1	1	1
18	GEAR MOTOR	GJ1510	450021-01	1	1	1	1
19	BRACKET - GEAR MOTOR	S.S	443952-01	1	1	1	1
20	CLAMP	NO. 249	427902-03	1	1	1	1

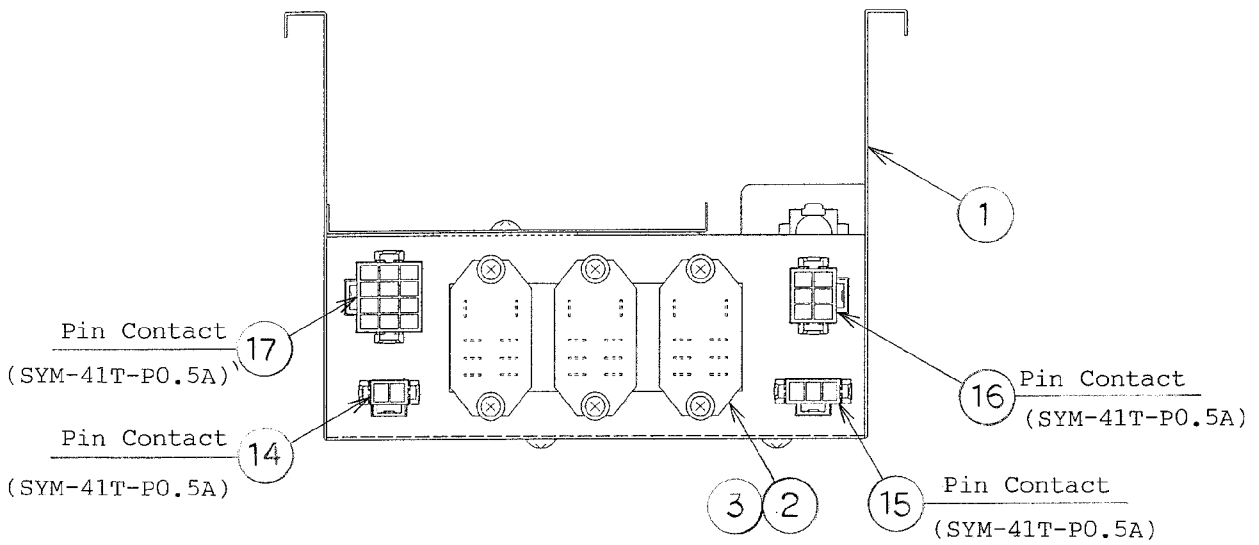
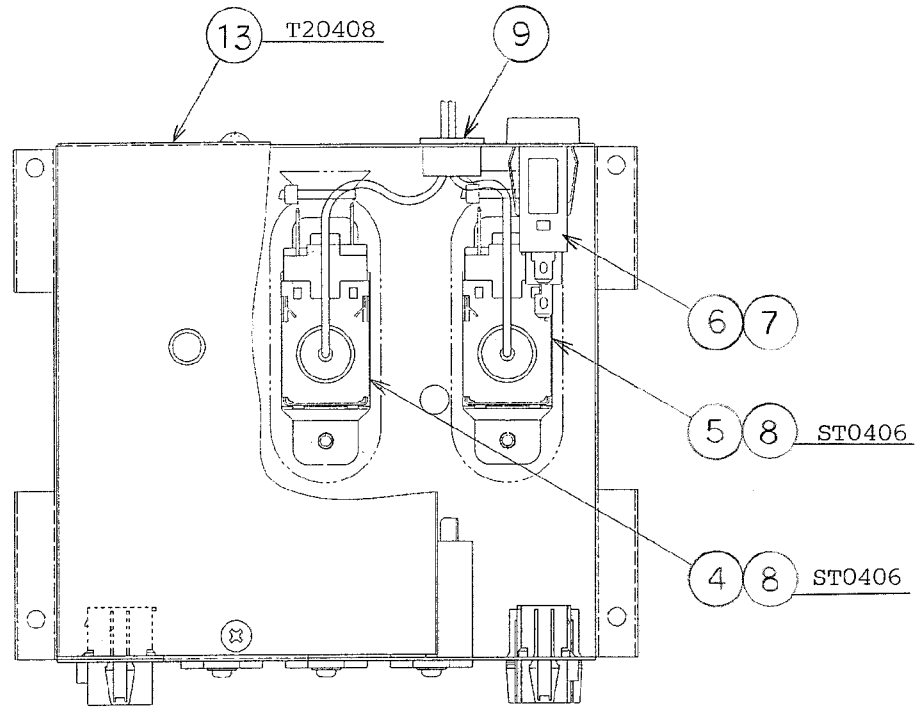


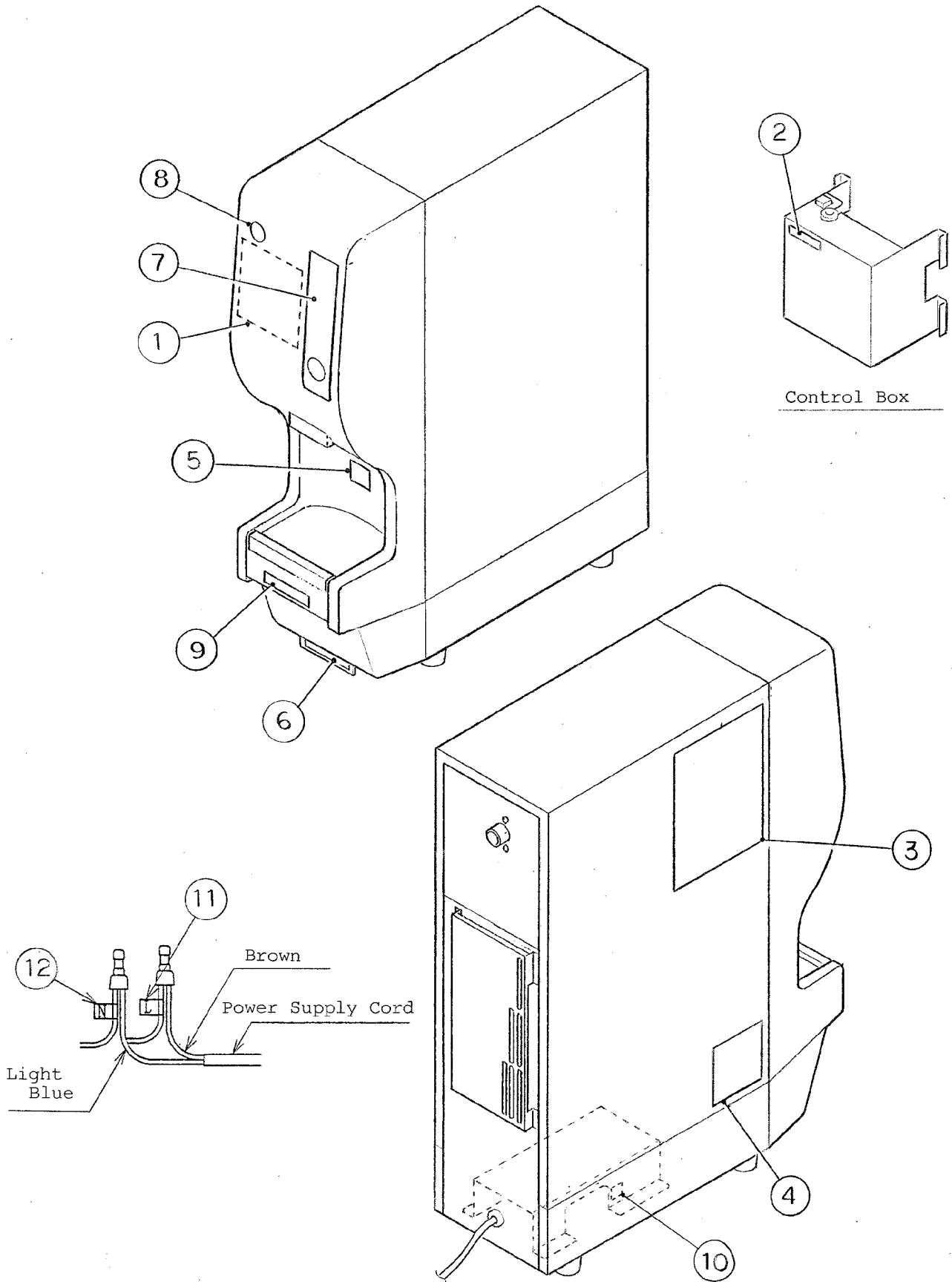


HE

MODEL: DSM-12CE TITLE: D. MECHANISM ASSY							
INDEX NO.	DESCRIPTION	MATERIAL OR MODEL NUMBER	PART NUMBER	REQ'D NUMBER			
				G-1 H-0	H-3 V-0	V-1	V-2
1	COVER - INSULATION	-	329812G01	1	1	1	1
2	SHUTTER	S.S	329813-01	1	1	1	1
3	PIN	S.S	414102-01	2	2	2	2
4	GUIDE	S.S	365171G01	1	1	1	1
5	BRACKET - SYNCHRONOUS		329815-01	1	1	1	1
6	SYNCHRONOUS MOTOR	J202-848	443994-02	1	1	1	1
7	SHIM (B)	S.S, t0.8	443956-01	2	2	2	2
8	O RING	1AP6	7611-P006	2	2	2	2
9	WASHER	6	443996-01	1	1	1	1
10	SHIM (A)	S.S, t0.8	443953-01	2	2	2	2
11	COLLAR	S.S	443954-01	1	1	1	1
12	SPRING	SWP-B	443955-01	1	1	1	1
13	WASHER	18	443996-02	1	1	1	1
14	CAM (B)		329816-01	1	1	1	1
15	SYNCHRONOUS MOTOR	J202-852	443995-03	1	1	1	1
16	BRACKET - SYNCHRONOUS	G.S	329817-02	1	1	1	1
17	CAM (A)		329818-01	1	1	1	1
18	MICROSWITCH	VX-54-1A3 Order No.28	P01331-01	2	2	2	-
		VX-014-1A3	P01937-01				1
19	MICROSWITCH	VX-53-1A2	451440-01	1	1	1	-
		VX-013-1A3	P01936-01				1
20	BRACKET (A) - MICROSWITCH	G.S	443958-01	1	1	1	-
	BRACKET (A) - MICROSWITCH	G.S	475268M01				1
21	TAPPING SCREW	3x18	437254-01	1	1	1	1
22	TAPPING SCREW	3x14	431415-02	2	2	2	2
23	LEVER		329819-01	1	1	1	1
24	ARM		344785-01	1	1	1	1
25	SHIM (C)	S.S, t0.5	447589-01	1	1	1	1
26	TAPPING SCREW		437254-02	4	4	4	4
27	CLAMP	No.249	427902-03	1	1	1	1
28	SEPARATOR	FOR V0.25	P01341-01	2	2	2	-
29	BRACKET (B) - MICROSWITCH	G.S	475269M01				1
30	TAPPING SCREW		456789-01				1

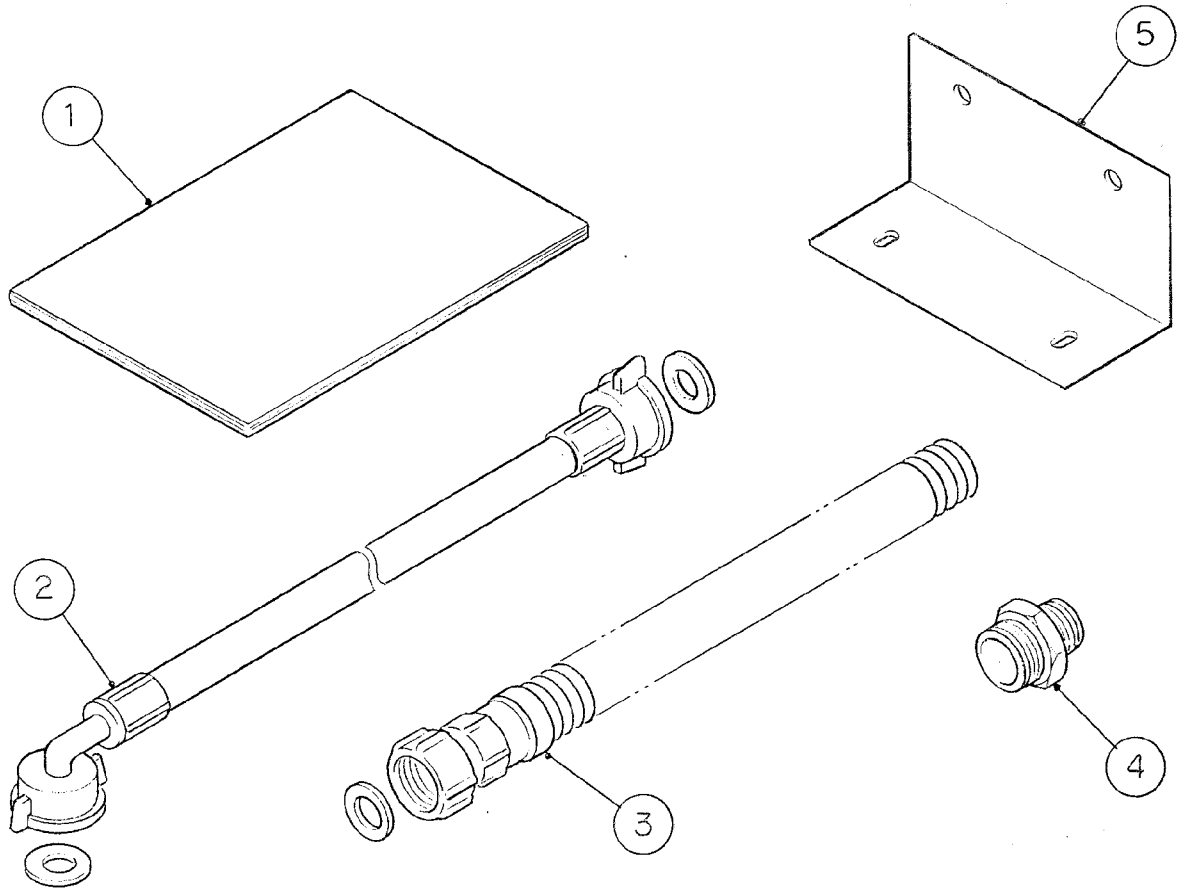






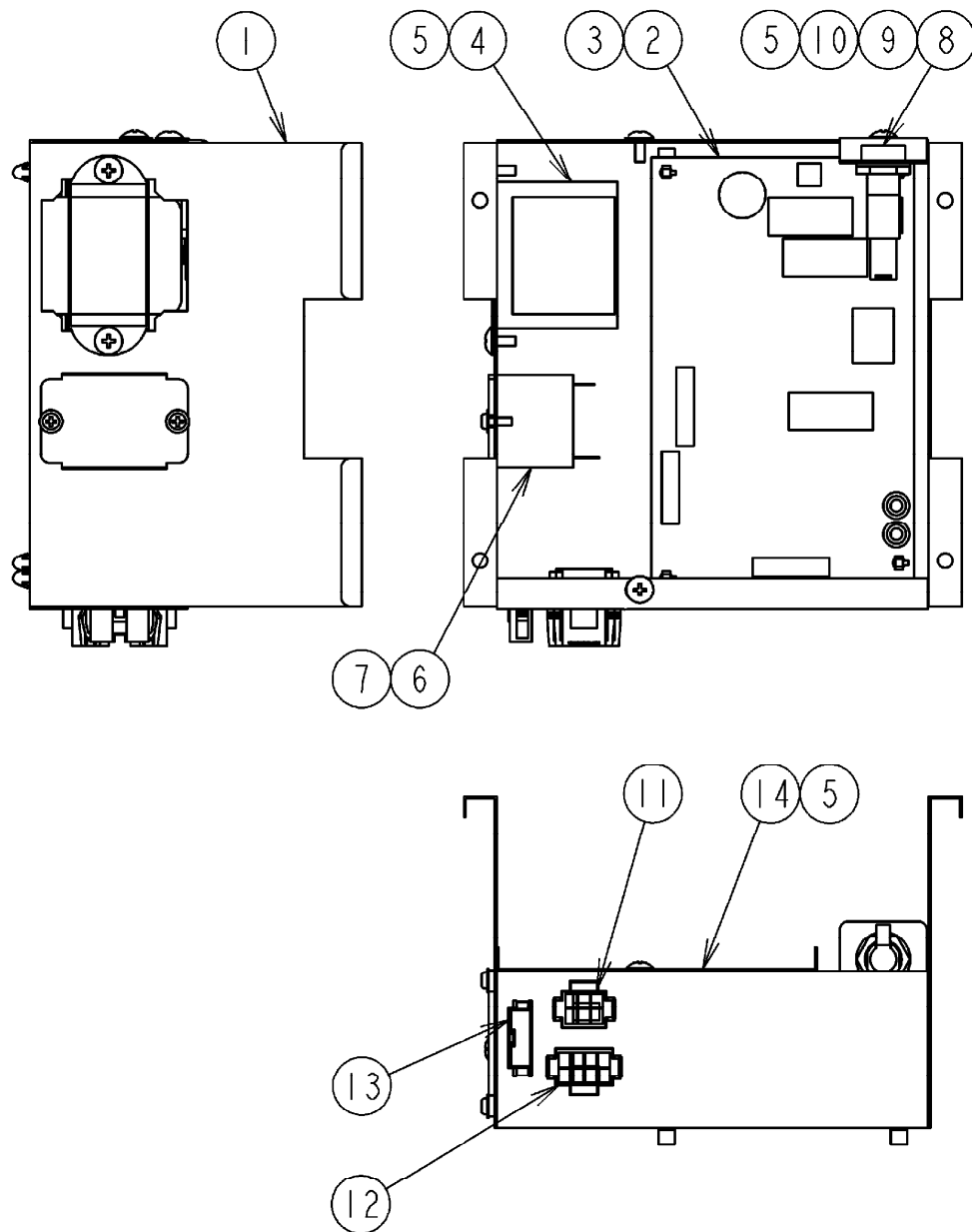
HE

MODEL: DSM-12CE								TITLE: F. LABEL LOCATION							
INDEX NO.	DESCRIPTION	MATERIAL OR MODEL NUMBER	PART NUMBER	REQ'D NUMBER											
				G-1 H-0	H-3 V-0	V-1	V-2								
1	WIRING LABEL	PVC FILM	339019-01	1	1	1	-								
		PVC FILM	374743L01				1								
2	FUSE LABEL	PES FILM	418020-02	1	1	1	-								
		PES FILM	466798-01				1								
3	LABEL - MAINTENANCE	PES FILM	339020-01	1	1	1	1								
4	NAMEPLATE	PES FILM	N/A	1	1	1	1								
5	LABEL - CAUTION	PETP FILM	427327-01	1	1	1	1								
6	LABEL - AIR FILER	PES FILM	452799-01	1	1	1	1								
7	LABEL - OPERATION	PES FILM	339021-01	1	1	1	1								
8	LABEL - PENGUIN	PES FILM	444478-01	1	1	1	1								
9	LABEL - DRAIN	PES FILM	452800-01	1	1	1	1								
10	LABEL - EARTH	PES FILM	450452-02	1	1	1	1								
11	LABEL - TERMINAL	PVC FILM	452379-01	1	1	1	1								
12	LABEL - TERMINAL	PVC FILM	452379-02	1	1	1	1								



HE

MODEL: DSM-12CE								TITLE: G. ACCESSORIES							
INDEX NO.	DESCRIPTION	MATERIAL OR MODEL NUMBER	PART NUMBER	REQ'D NUMBER											
				G-1 H-0	H-3 V-0	V-1	V-2								
1	INSTRUCTION MANUAL	PAPER	9124ME20A	1	1	1	-								
			9124ME20B				1								
2	INLET HOSE	HOSH01	450722-01	1	1	1	1								
3	OUTLET HOSE	IG	452311-01	1	1	1	1								
4	ADAPTER - NIPPLE	PA	452777-01	1	1	1	1								
5	BRACKET	G.S	452801-01	1	1	1	1								



HE

MODEL: DSM-12CE		TITLE: H. CONTROL BOX ASSY					
INDEX NO.	DESCRIPTION	MATERIAL OR MODEL NUMBER	PART NUMBER	REQ'D NUMBER			
				V-2			
1	CONTROL BOX		259318M01	1			
2	CONTROLLER BOARD		P01930-01	1			
3	BOARD SUPPORT		468879-01	4			
4	TRANSFORMER		P00012-01	1			
5	TRUSS HEAD TAPPING SCREW T2		FT20408F0	5			
6	RELAY		431957-01	1			
7	TAPPING SCREW		431415-01	2			
8	FUSE HOLDER		P00083-01	1			
9	FUSE		P00443-01	1			
10	BRACKET - FUSE		475270M01	1			
11	RECEPTACLE HOUSING		454246-04	1			
12	RECEPTACLE HOUSING		454246-05	1			
13	RECEPTACLE HOUSING		462959-06	1			
14	COVER		475267M01	1			